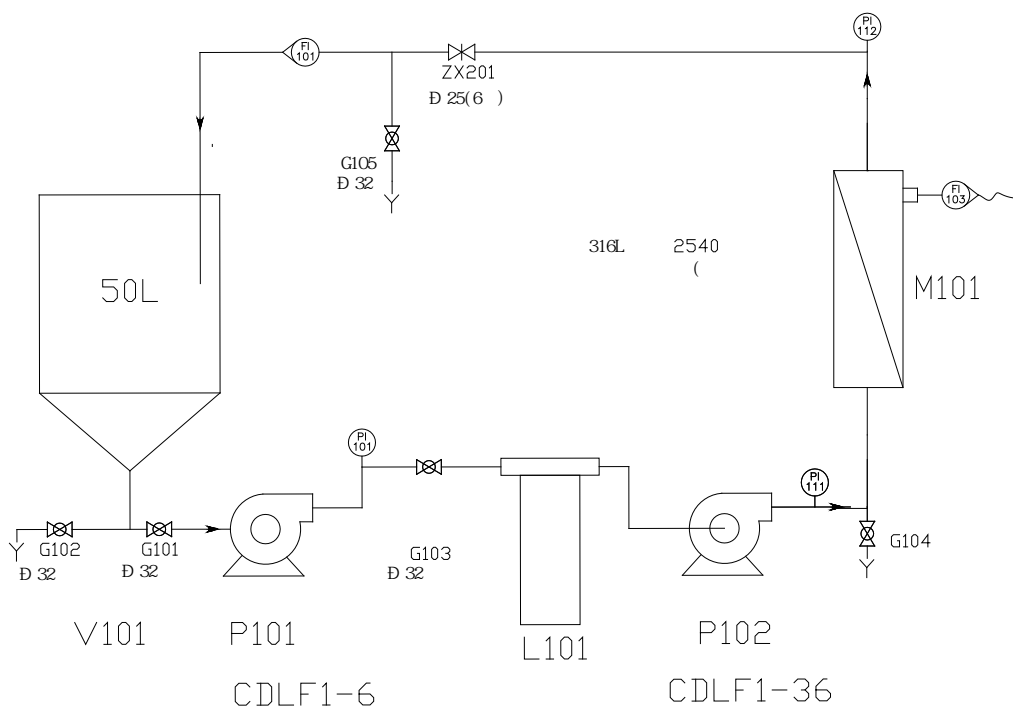


WTM-2540D



.....	2
.....	2
.....	3
.....	4
.....	4
.....	5
.....	6
.....	7



G105

G105

5

25Bar

5.

2540

2.5

50L/H

2540	
	WTM-2540D
	2540
	1.77
	2.5Mpa
	5—45
	PH 1--14
	8L
	100L/H (0.8MPa)
	30—50L/h
	50—

1		50 L				
2						
3						
4						
5		2540				
6		2.5				DL2540
7						
8		25Bar				
9						
10						
11						
12						
13						
14						
15						

2540



T 9n <</MCID 28 >>BDC /C251 1 Tf -5.05 -2.64 T1

2540F				
-------	--	--	--	--

