

WTM1040UHP-C 7.0MPa =
6.0MPa

1

e

i

~

>6.0MPa, 7.0MPa = ?L

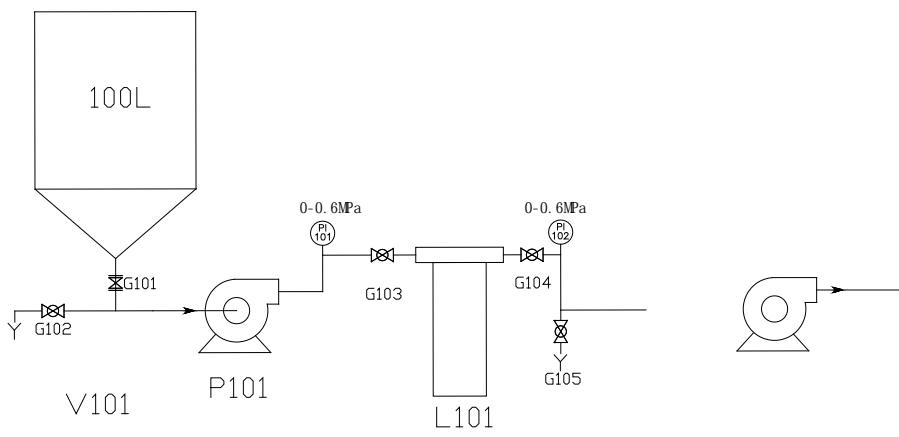
f v ~ >6.0MPa ;"Ø P #8ç #]F 17 - +kB ~0561-67126688

5 v ~www.mofenli.net

V-U ~

0551-63667960

.....	2.....
.....	2.....
.....	3.....
.....	4.....
.....	4.....
.....	6.....
.....	6.....



? =#WOAB* D

V101 P101 P10 M101

1

V101 G101 G104 ZX101
G10 G105 G106 P101

V101 G101 G104 ZX101
G10 G105 G106 P101

ZX101

V101

=Aô = (fl&i

1.

15-

Bar

4.

5.

6.

1 4040

4040

7.5

50—5

7.

8

° **Aô = † f**

	WTM-4040JHP-1
	4040
	7.5
	1
	12.0Mpa
	5—45
PH	1--11
	15L
	250L/H
	50—100L/h
	50—500L
	5.5KW@380V
	1.6m* 1m* 2m

£ =315 4œ F

1					1	
2		³	FRPP		1	
3					1	
4		5.5kw			1	ABB
5		³			1	cat
6		PV4040-1000S			1	ROPV ()
7		PV4040-1800S			1	
8	RO	100 7.5			4	
9		160Bar				
10		0-			1	
11		0-			1	
12		0-100				
13		MPa			1	
14		6			1	
15		6				
16	Y	1			1	
17					1	
18					1	
19		5.5KW			1	
20					1	

9 315 Ô-

000.00

30

3

1

17%

i = Aô = 4{}

