



1812	2
2540	5
4040	8
	/	10
	12
	14
DTRO	16
	19
	20
	22

1812

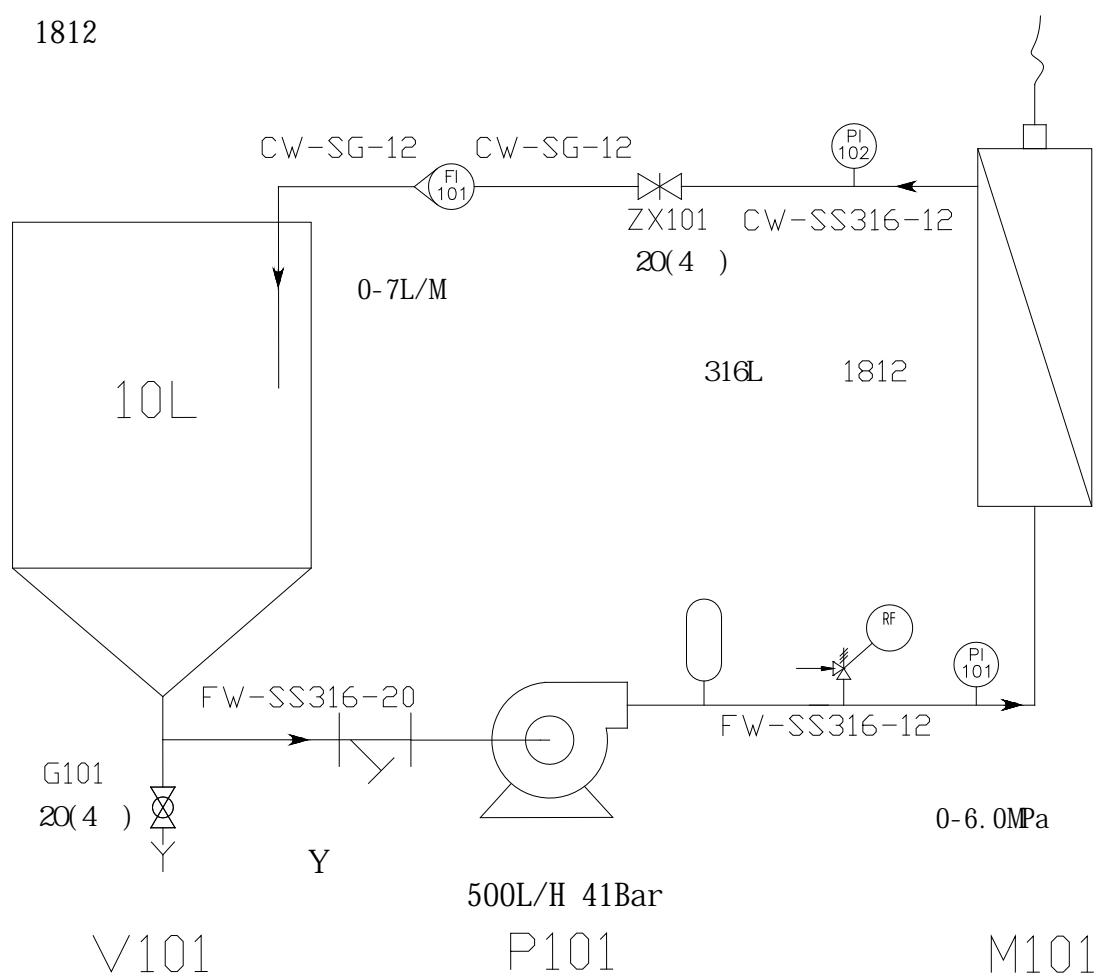
1812

- 1 ,
- 2 800ml ,
- 3
- 4 60 Bar
- 5
- 6

1812

1812		WTM-1812G	WTM-1812D
		1812	1812
		0.4	0.4
		4.0Mpa	0.8Mpa
		5—45	5—45
	PH	1--14	1--14
		1L	1L
		0.5—5L/h	0.5—5L/h
		5—100L	5—100L

1812



1812

70



* * =58 *28 *40



2540

40bar

2540

1

2

5-6L

3

40Bar

4

5

6

2540

2.5

100L/H,

20—50L/H

7

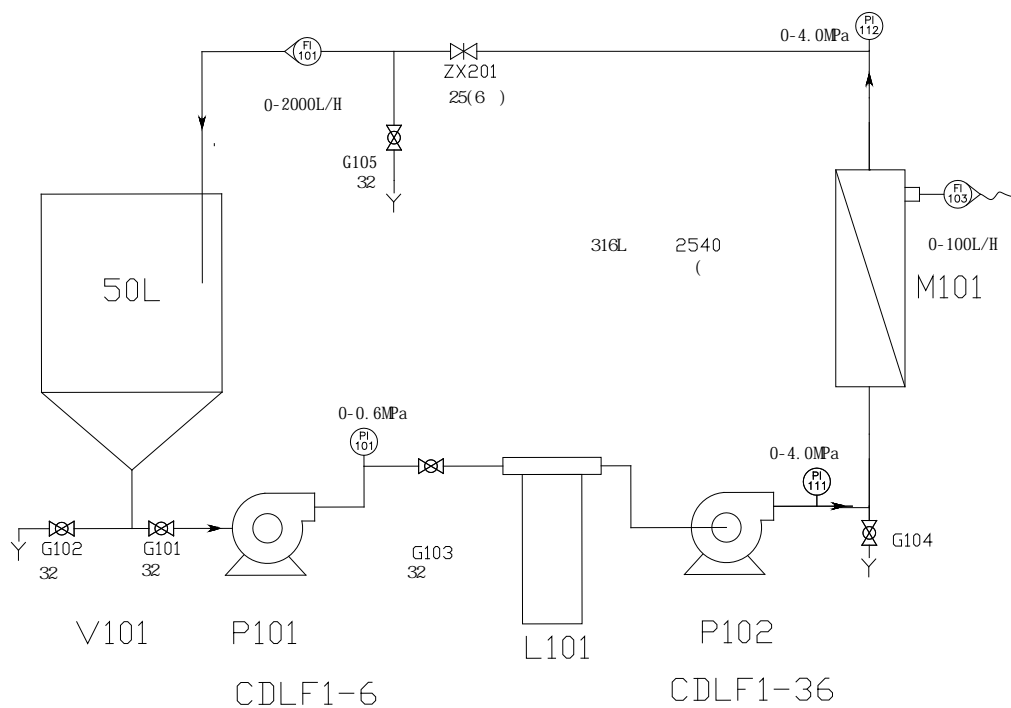
316L

8

2540

2540		WTM-2540G	WTM-2540D
		2540	2540
		2.5	2.5
		4.0Mpa	1.6 Mpa
		5—45	5—45
	PH	1--14	1--14
		8L	8L
		5—50L/h	5—50L/h
		50—500L	50—500L

2540



2540



4040

4040

40bar

4040

1

2

10L

,

3

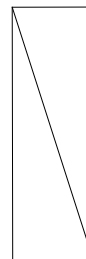
304

4

5

MF UF NF RO

6



4040



/

0.8MPa/4.1MPa

1.

- 2.
3. 0.8MPa/4. 1MPa
- 4.
6. 19.6
- 7.

0806G		WTM-0806G
		50mm
		19.6c
		0.8Mpa
		5—55
	PH	1--14
		0.8L
		1—4L/h
		0.2—4L

/





0.05 μ m 1.4 μ m

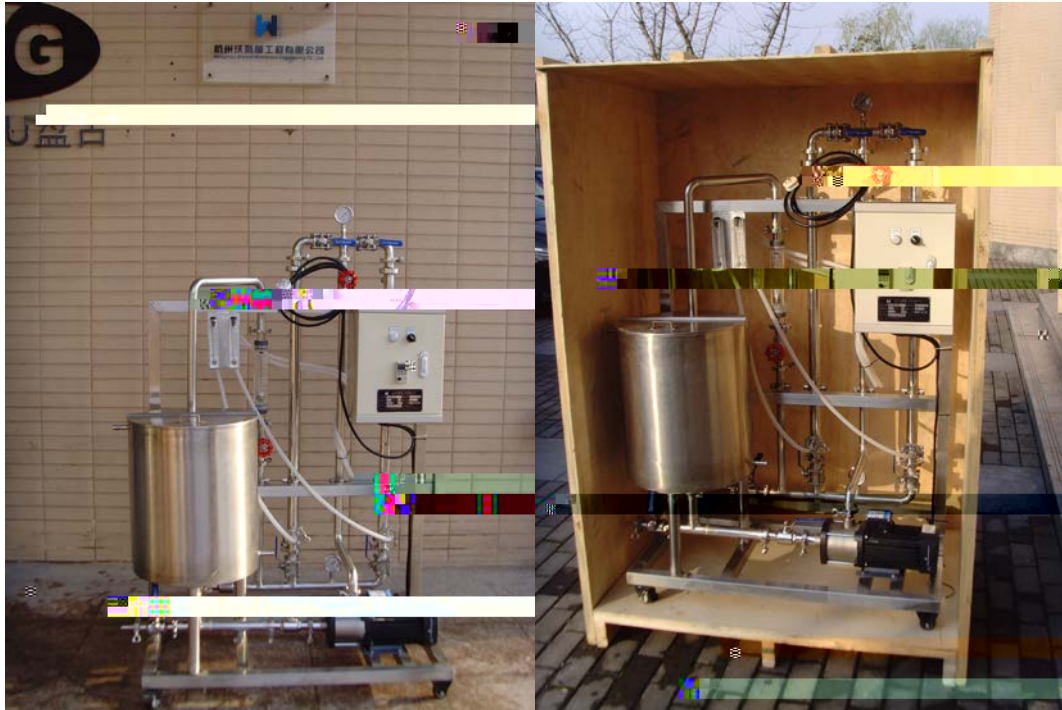
1 7 19

1

2

3

4



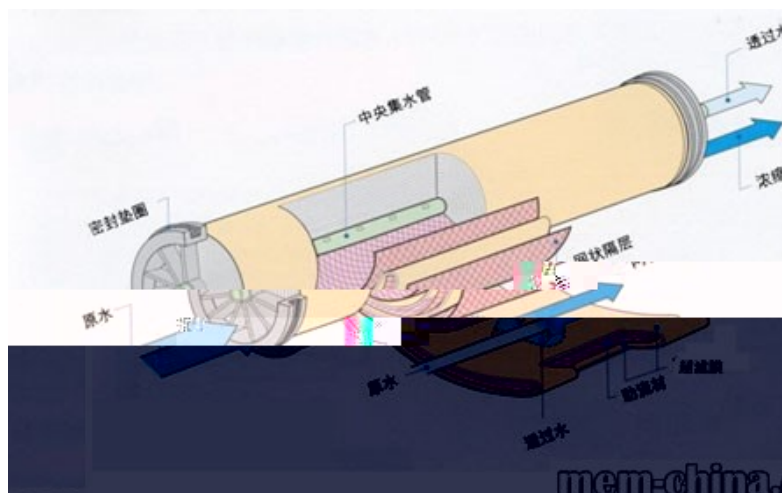
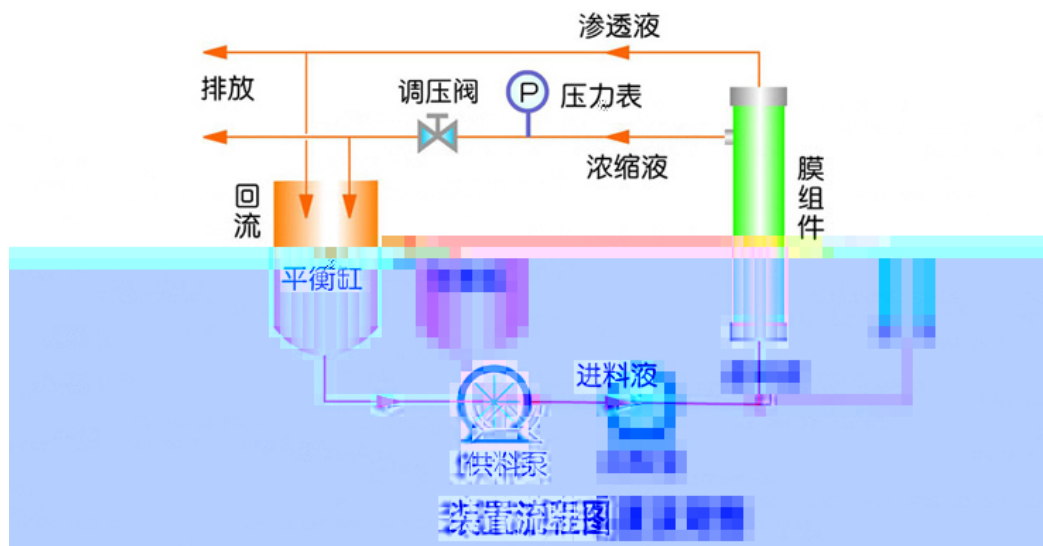
2

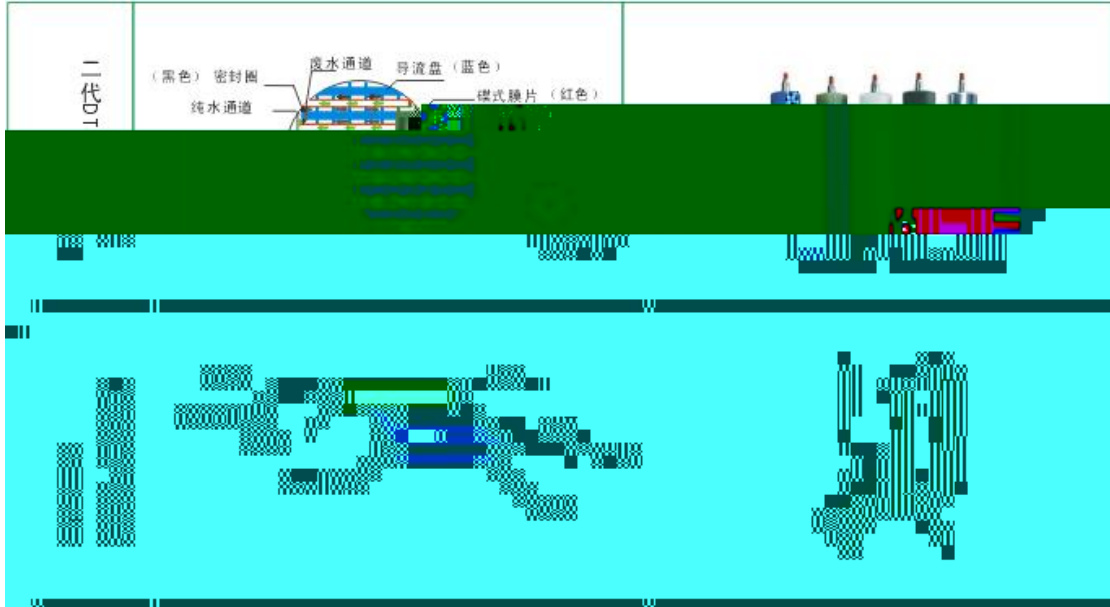
3

4

500-30000

5





1		+	
2			
3			
4			
5			
6			
7			
8			
9			
10			
11			
12		

DTRO

	WTM-DT210D	WTM-DT210G
	209	9.4
	3.0-7.0Mpa	9.0-12.0Mpa

DTRO



1.

2.

3.

20-30%

1.

2.

3.

4. 20-30%

1.

2.

3.

4. 20-30%

1.

2.

3.

4. 20-30%

:

.....

157.2BDC 0 539.31 841.923FOW () 13 32~~40~~ SNO.343 w/C21 1 T0 Tw 61Tr

.....

.....

.....

.....

RO . MF UF NF

--- /

1000—30 Dal , /

/

- 1.
- 2.
- 3.
- 4.
- 5.
- 6.

100---1000Dal

98%

30-50%

1.

2.

3.

4.

5.

6.